



MULTIPLE USE MANAGEMENT PLANNING

**An Enhanced Planning Process to
Guide the Day to Day Management of
Queensland's Native Forest Estate**



QUEENSLAND
GOVERNMENT

DEPARTMENT OF NATURAL RESOURCES

Working in Partnership

WITH THE COMMUNITY





INTRODUCTION

The MUMP process aims to handle complex planning situations and deliver ecologically, socially and economically acceptable outcomes.

The Department of Natural Resources (DNR) is working with key stakeholder groups and the community in forest management planning processes.

The National Forest Policy Statement (1992) called for an approach to manage forests for all values and uses. As a result the Regional Forest Agreement process is identifying a broad regional set of forest values.

DNR is developing a forest planning system based on a Multiple Use Management Planning (MUMP) process, to deliver site specific operational management practices for the regional value sets.

The MUMP process applies best practice methods and technology and is being implemented by a multi-disciplinary planning team.

The core objectives of the MUMP process are to:

- ◆ derive maximum benefits from sustainable use of forest resources;
- ◆ provide greater planning certainty and security;
- ◆ provide structured opportunities for community participation;
- ◆ improve the level of transparency and accountability associated with forest management planning.

Incorporating Community Values in Forest Planning

The purpose of this booklet is to provide a clear outline of the range of opportunities members of the community have to participate during the eight phases of the Multiple Use Management Planning (MUMP) process.

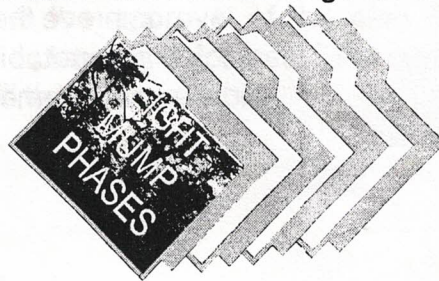
While opportunities exist for community input into each phase of the planning process, a major input from the community is in the form of a community value set on the range of forest uses.

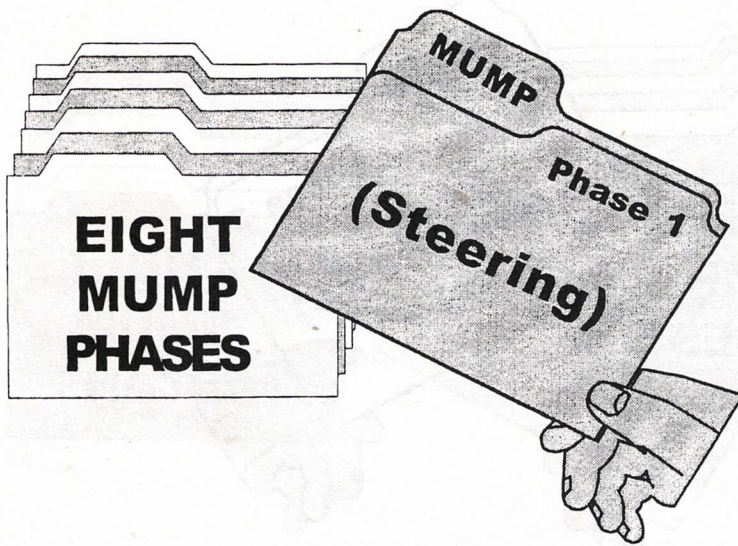
The Department of Natural Resources has developed a standard methodology for assessing community values which involves community representatives comparing forest uses, and (in their opinion) ranking these uses in order of importance.

The MUMP process also provides an opportunity for Experts to participate in the identification of the relative importance of each forest use. These Experts, including Traditional Owners, Economists, Foresters, Ecologists, Historians and Recreational Users, may be members of the local community with expertise in a forest use.

Community values play an important role in the planning process. They give an order of importance to the results of the expert assessment of forest uses. Community input also provides forest planners with the rationale for choosing the preferred use for areas within a forest.

For example, if a site is assessed and found to be equally suitable for two incompatible uses such as recreation and open cut mining, and the community places more importance on recreation than mining, a planning outcome for that particular site would be to manage the site for recreation.



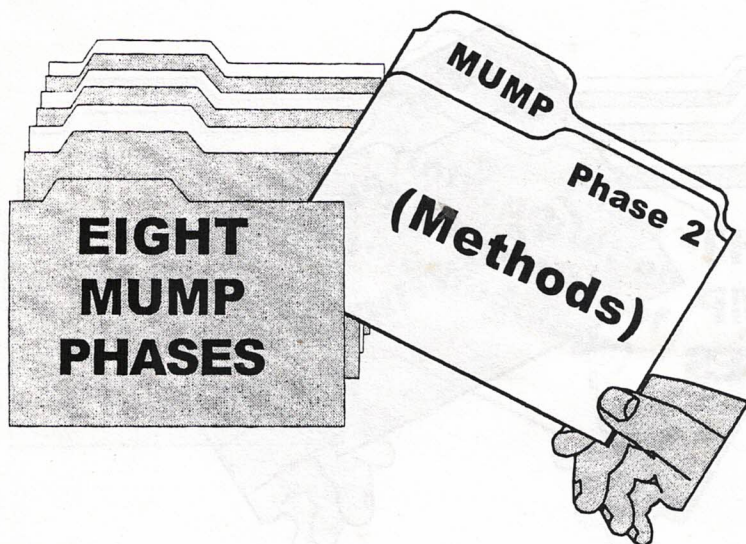


In phase one, the regional sets the scope of the planning exercise and develops operational protocols. A range of potential stakeholders are identified and a Community Advisory group is established if the scope of the planning exercise warrants it. One of the first tasks of the Community Advisory group is to select representatives to be included in a Steering Committee, which is otherwise determined by the management group.

The role of the Steering Committee is to manage the process, ensure accountability and equity and be the first step in the resolution of any friction that may arise.

The role of the Community Advisory group is to help coordinate the gathering of regional and local community values for the range of forest uses and to keep the community informed about the MUMP process.

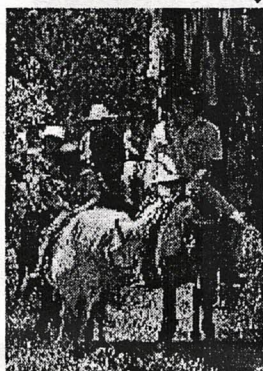


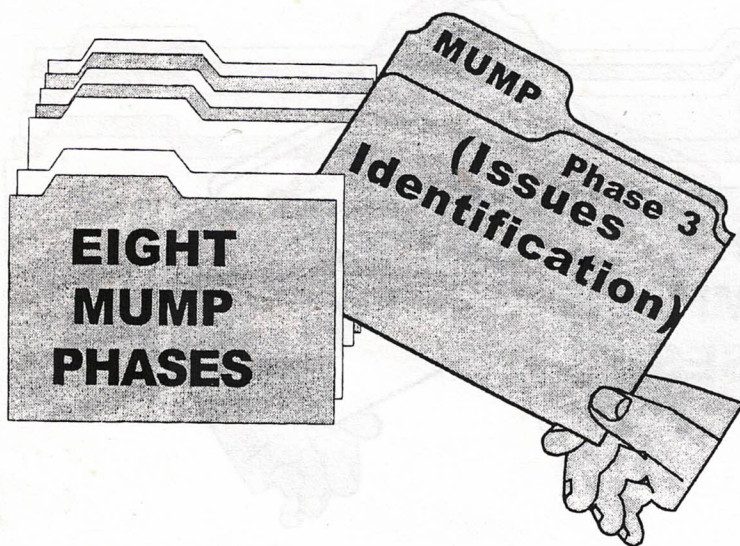


In phase two the management team identifies the broad issues and defines the planning area. The number of forest values to be assessed and site specific planning methodology are set.

In addition, Communication and Consultation plans are developed to;

- ◆ provide the community with the information they need to understand better the Multiple-Use Management Planning process.
- ◆ provide maximum opportunities for the community to become involved early in the process.
- ◆ keep the community routinely informed throughout the planning process so they do feel involved and keep their sense of what is happening.





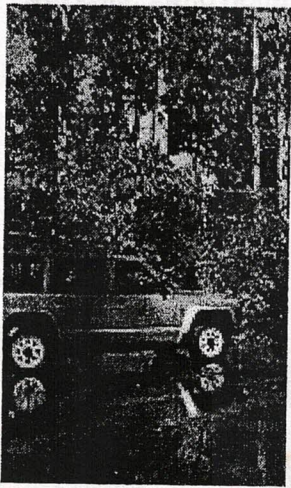
In phase three, specific issues relating to the planning area are identified and the process for determining community values for forestry uses begins.

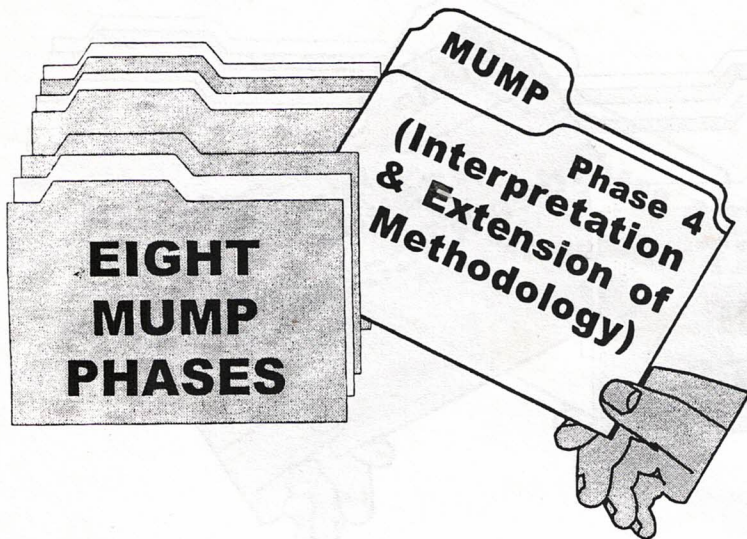
This process is achieved through structured interviews with members of community groups.

Advertisements will be placed in local newspapers and survey sites will be set up in high use zones near or in the planning area and in DNR offices.

DNR's Internet site will also have back ground information and issues can be e-mailed to the management team.

Issue submissions will be categorised spatially and thematically and incorporated into the decision making process.

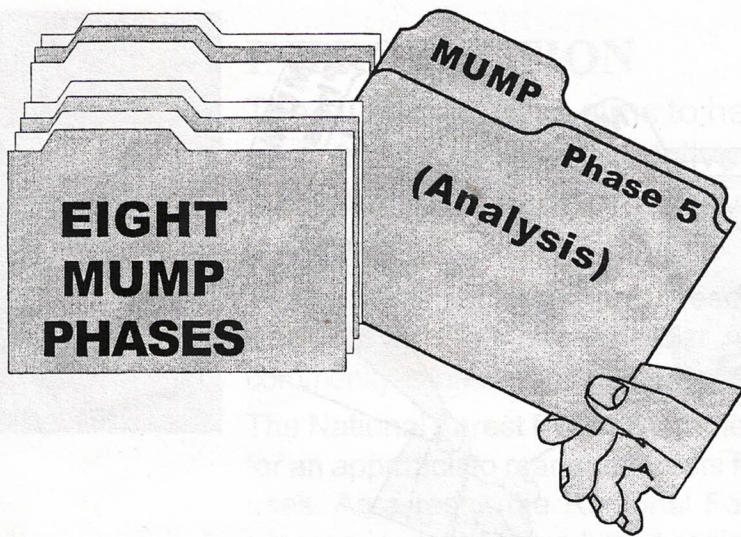




Phase four involves adult learning processes and provides an opportunity for further input into the MUMP process. In phase four, new members of the Expert group and the Community Advisory group are trained in the planning methodology for the assessment and evaluation of forest uses.

While many of the evaluation processes are pre-determined by national and state standards, there is still some opportunity for participants to have input into the methods used for evaluation of forest values and community values

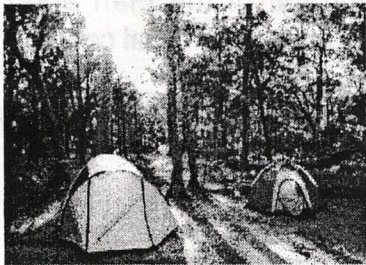


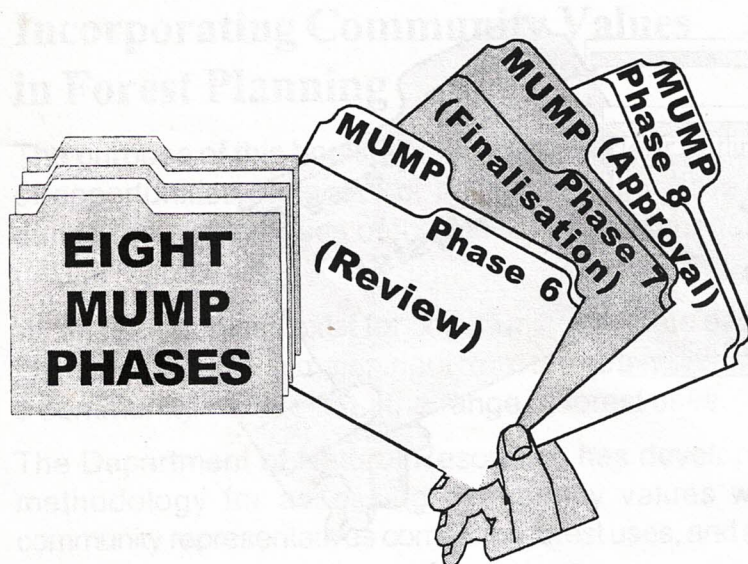


Phase five differentiates the MUMP process from other planning processes. This phase is based on the integration of science and the values of the community, and, together with the steering and management structure of the MUMP process, is designed to promote an open and accountable process for the resolution of issues.

Phase Five is the analytical core of the MUMP process and consists of:-

- (5.1) Capturing and collating site specific data and assessing the suite of forest uses;
- (5.2) Gathering community and stakeholder values;
- (5.3) A process for examining management & compatibility issues and achieving sustainable outcomes.

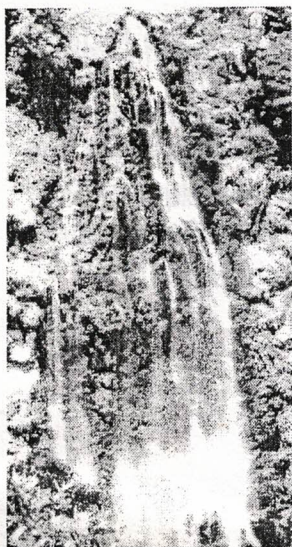




In phase six a draft of the management plan is available for comment by the community. Copies of the draft plan will be sent to all participating community groups and copies will be made available on the Internet. Comments can be forwarded by mail or e-mail and all comments will be reviewed by the management group before a final document is produced.

In phase seven, the plan is completed incorporating comments from phase six where appropriate. A formal appeal process is in place to resolve any outstanding issues.

Phase eight is the approval of the plan and adoption of the planning outcomes. Final copies of the plan will then be available.



Further Information

For more information about Forest Values and the MUMP process ring the following telephone numbers, or contact your nearest Department of Natural Resources office.

BRISBANE

Gus Cheratzu

(07) 3234 0150

NORTH REGION (Atherton)

Robyn Smith

(07) 4091 1844

CENTRAL REGION (Rockhampton)

Matt Ferguson

(07) 4938 4970

SOUTH EAST REGION (Gympie)

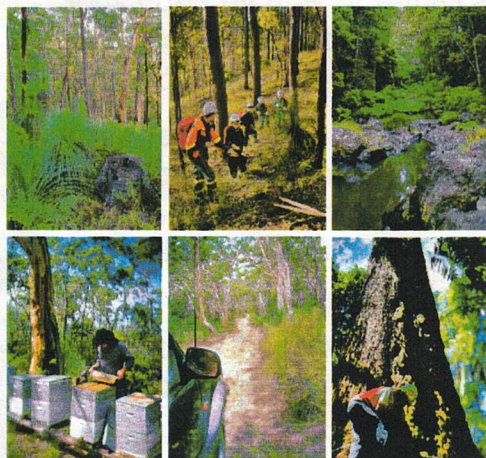
Andrew Young

(07) 5482 1050

SOUTH REGION (Toowoomba)

Bronwen Jones

(07) 4688 1170



Forest Planning
the right activity in the right place