

Performance Assessments in Western Australia



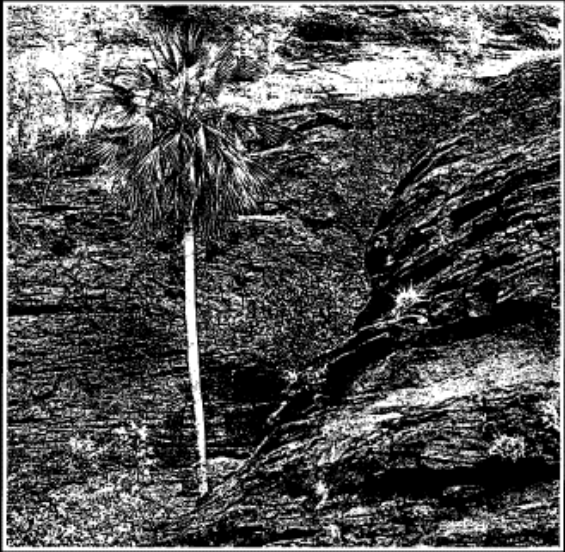
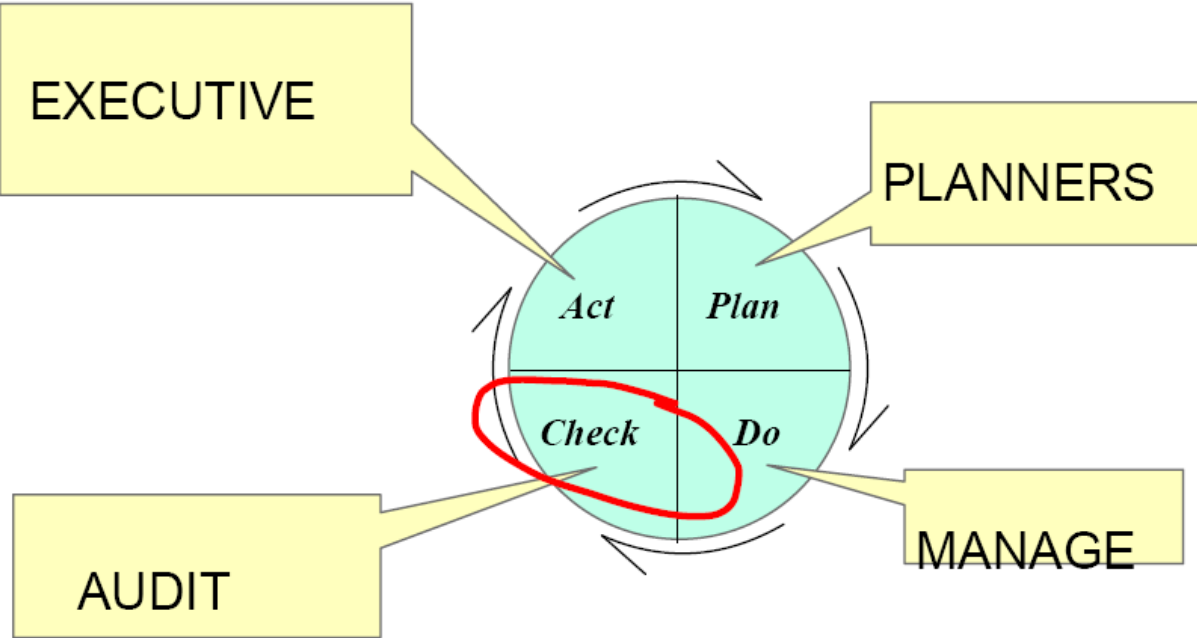
- Introduced WCPA framework in 2004
- Used for management plans on conservation reserves, forest management (state forests and timber reserves)
- Status and issue-based assessments
- Look at key threatening processes to objectives

Management Plans

PLANNING BRANCH
DO NOT REMOVE

Purnululu National Park

Management Plan
1995 - 2005



MANAGEMENT PLAN No. 33



Department of Conservation
and Land Management



National Parks and Nature
Conservation Authority

Management Plans

Actions - A program will be prepared on fire management for the Park.

Threatening processes

- inappropriate fire regimes

Actions - Maintain low key public access in a way which retains the wilderness values of the Park.



Threatening processes

- visitor impacts

Management Plans

-Action - Inform landholders of the importance of minimising nutrient input into the lakes.

Threatening processes for lake ecosystems and thrombolites

- nutrient inflow
- climate change

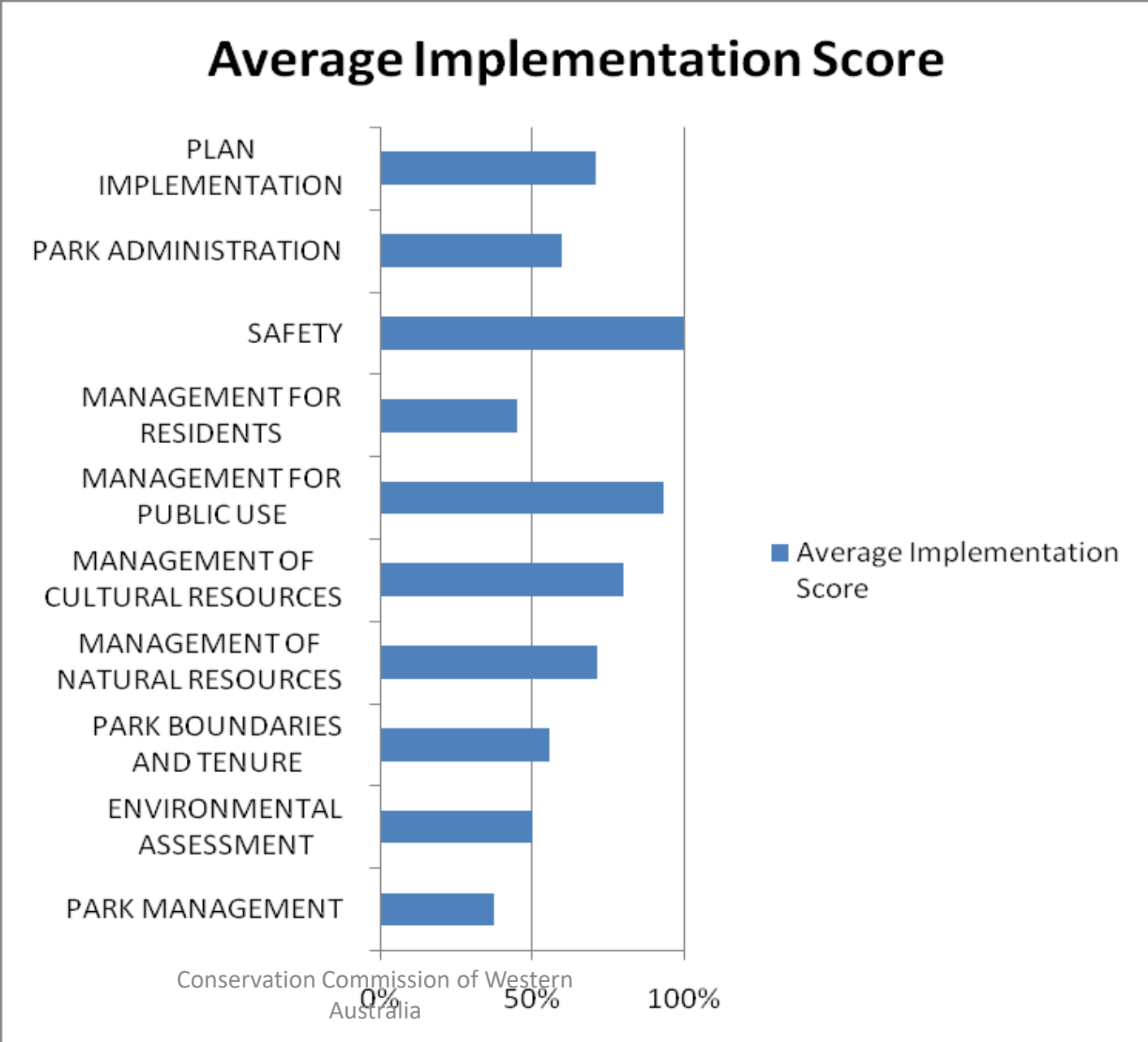


Action – Change tenure from State forest to national park.

Threatening processes

- potential industry

Measuring:- qualitative & quantitative



Western Australian Islands

-Status Performance Assessment

Climate change - sea level rise
Biosecurity/Quarantine – weeds and pests
introduced animals:

Industrial, commercial and recreation campin

24/11/2008

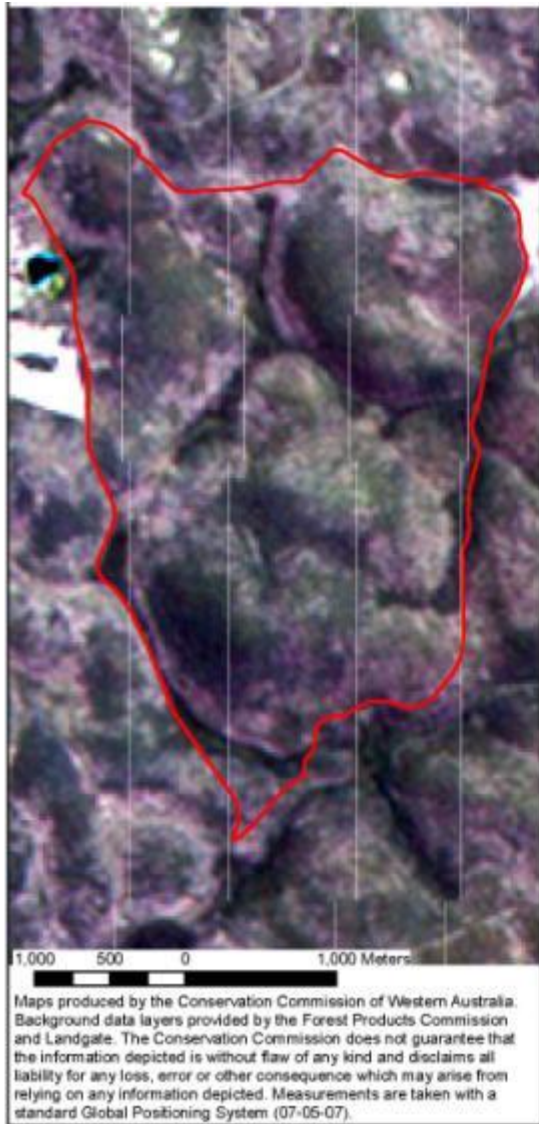
Conservation Commission of Western Australia

Forest Management Plan 2004-2013

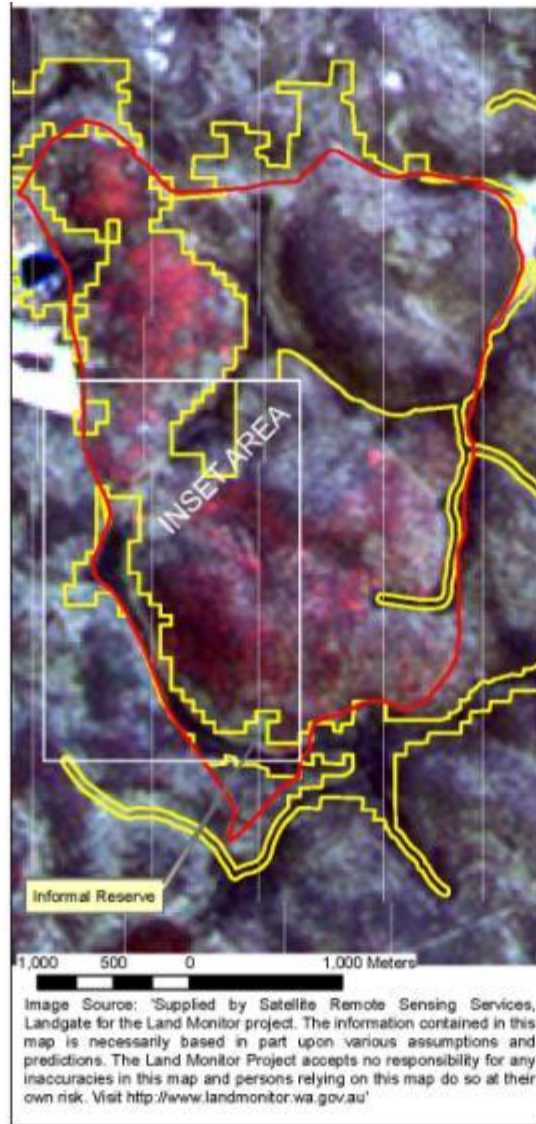
Performance Assessments

- 
- A photograph of a logging site. In the center, a yellow tractor with large, treaded tires is parked on a dirt path. To the left, there are several large stacks of cut logs. The background shows a dense forest of tall trees. The ground is covered in dirt and some debris.
- Implementation standards
 - Planning and protection
 - Mid-term audit

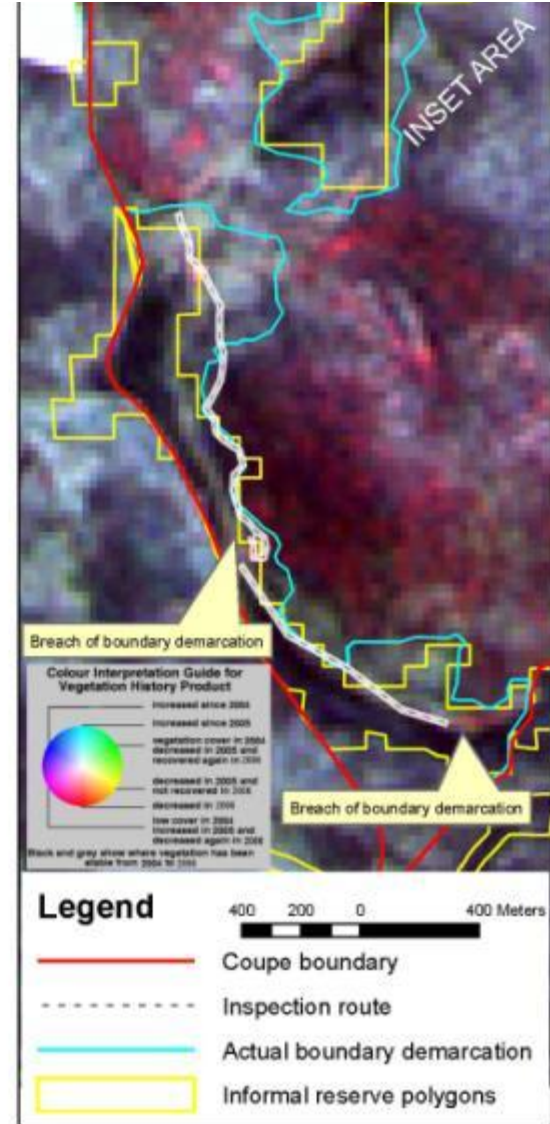
Measuring:- outcomes



24/11/2008



Conservation Commission of Western Australia





Performance Assessments - issues

Management Plans

- 10 year term*
- New science*
- Other planning*
- KPIs intro 2002*
- Continuous improvement*



Performance Assessments - future

- Plans by biogeographical groupings
- Plan actions and KPIs that are measurable; periodic reporting
- Less 'aspirational' strategies